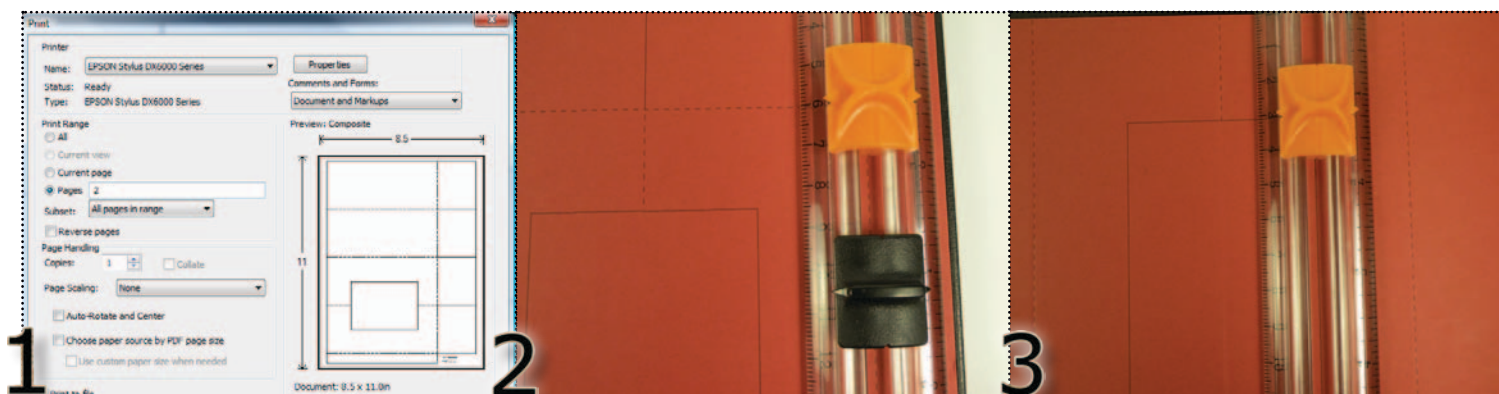




- Sweet Season stamp set (#116471)
- Love Letters Designer Series Paper (#117162)
- Riding Hood Red card stock (#111348)
- Very Vanilla card stock (#101650)
- Early Espresso Class Ink (#119670)
- Riding Hood Red Stampin' Write Marker (#120971)
- 5/8" Satin Ribbon - Early Espresso (#119753)
- 3/16" Corner Small punch (#119871)
- 2" x 1-3/8" Oval Extra-Large punch (#119859)
- Window Sheets Medium (#114323)
- Sticky Strip Adhesive (#104294)
- Glue Dots (#103683) (optional)
- Stampin' Dimensionals (#104430)
- Bone Folder (#102300)
- Paper Snips (#103579)
- Paper Cutter (#104152)
- Cutting & Scoring Blade Refill (#104154) (optional)



STEP1: Print the box bottom template found in this tutorial on 8-1/2" x 11" Riding Hood Red card stock. The box pattern is 10-1/2" x 7-3/4". Score at 2-1/2", 5", 7-1/2" and 10" on the long side. Rotate the card stock 90 degrees and score the bottom flaps at 2".

STEP2: BOX BOTTOM: Using the Paper Cutter with the orange cutting blade and the black scoring blade together makes quick work of cutting the box. With the cut blade at one end and the scoring blade at the opposite end, line your project up in the Paper Cutter and move the orange blade through the solid cut lines, making sure to continue until the side arrows are aligned with the score line. Repeat with black scoring blade.

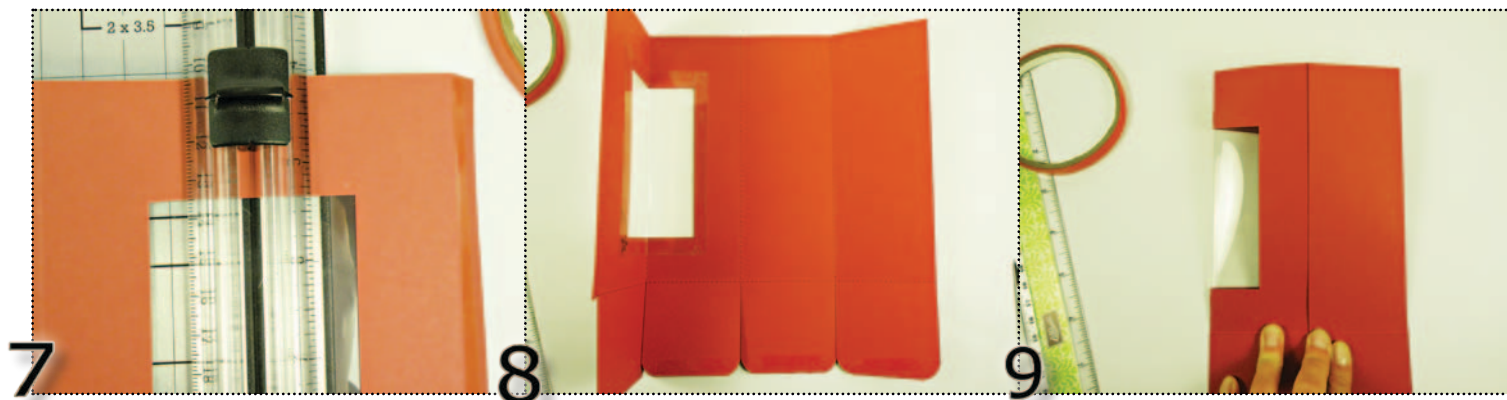
STEP3: Cutting out the peek-a-boo center is just as easy with the Paper Cutter. Use the arrows on the side of the orange cutting blade to align to the cross cut lines. If you prefer to cut by hand, fold the project first on the score line and use scissors to cut the rectangle.



STEP4: Turn the card stock over so there are no print lines displayed on the box. This will be the outside of the box. The print lines will be in the inside of the box. Use a bone folder to create deep fold lines in your project. If you prefer, you could also create a second box from Designer Series Paper to slide in to the inside of the box for an elegant look when the box is empty.

STEP5: Use the corner rounder punch to add curves to the bottom of the box flaps. This is an optional step.

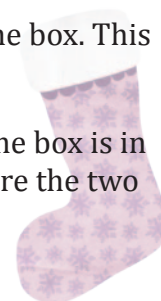
STEP6: Cut a window sheet to 4-1/4" x 3-1/4". Add Sticky Strip to each side of the sheet on one side. Remove the red liner protective material to attach to the inside (print line side) of the box opening, being careful to align so the window sheet completely covers the opening. **Tip:** This project refers to using Sticky Strip to adhere the box. You can replace Sticky Strip with Glue Dots or Multipurpose Liquid Glue, whichever you prefer. The box requires a strong adhesive, so glue sticks and SNAIL adhesives will not work for this project.



STEP7: Take the box back to the paper cutter with inside up (print lines) and gently score the window sheet with the black score blade or a bone folder. Use the score lines that have already been made on the box as your guidelines. Remove from the paper cutter and gently fold using the bone folder to ensure a complete and straight fold. Take your time on this process as a clean fold will look the best.

STEP8: With the inside of the box facing up, add Sticky Strip to three tabs at the bottom of the box. This sample shows the right three tabs with Sticky Strip on the tab ends.

STEP9: Fold the box so the outside of the box is facing you in a window fashion. Make sure the box is in alignment. Make any last-minute adjustments at this time. Add Sticky Strip to the flap to adhere the two sides together. You now have a square box.

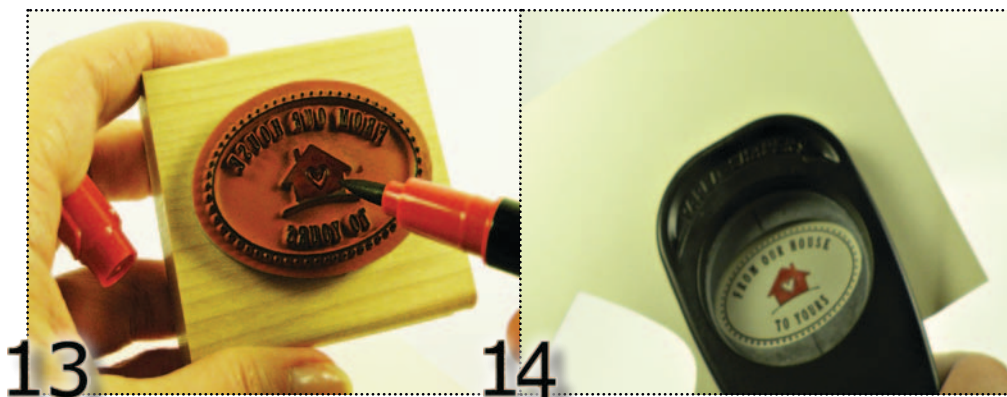




STEP10: Stand the box on end so the flaps are facing you open. Starting with the flap with no Sticky Strip, fold the box bottom. Move to the next tab, remove the Sticky Strip and adhere. Repeat until the box bottom is complete.

STEP11: BOX TOP: For this sample, we used Designer Series Paper, but you could also use coordinating or complementary card stock instead. Feel free to use the pattern provided and print it on your Designer Series Paper or card stock. You could also cut a 4-1/2" square and score each side 1" in. Cut flaps as shown on the template. Add Sticky Strip to the opposite ends and adhere to complete the box top.

STEP12: Cut ribbon to 16". TIP: To figure ribbon length, wrap the ribbon one and a half times around the box for a knot. Wrap the ribbon 2 times around the box for a bow. Use glue dots to secure the ribbon on the box top on three sides if desired. Tie a knot (or bow). Trim off excess ribbon.



STEP13: Stamp the "FROM OUR HOUSE" stamp in Early Espresso. Remove all ink from the house image in the center of the stamp using Stampin' Mist Stamp Cleaner or water on a cotton swab. Color in the house in Riding Hood Red using a Stampin' Write Marker. Huff on stamp to moisten, then stamp onto 3" x 3" Very Vanilla card stock.

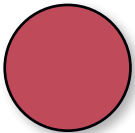
STEP14: Punch the artwork out using the oval punch. Add four Stampin' Dimensionals to the back and adhere to the front of your box. The box is now complete. Fill with Kisses & Hugs, nuts, baked goods, popcorn, candy canes, a handmade scarf, or tags, ribbons, and bows for a wrapping kit. The options are endless and the thoughtfulness and love you put into the gift box will be appreciated for a long time.



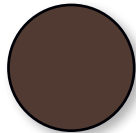


ALTERNATIVE: This project uses the Sizzix Box #2 die which cuts and scores in one motion saving you time. Textured Pink Pirouette card stock was used with our Full Heart Extra-Large punch for the window. A quick project for any Valentine. Simply switch out the supplies to delight any recipient for any occasion. Use the Two-Step Bird Extra-Large punch and fill with bird seed for a bird watcher's delight. Use the Ornament Extra-Large punch on Real Red card stock and fill with candy canes and hot chocolate that will serve as a warm treat for cold nights. There is really no limit on how these boxes can be used.

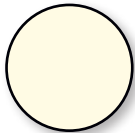
Project Swatch



*RIDING HOOD
RED*



*EARLY
ESPRESSO*

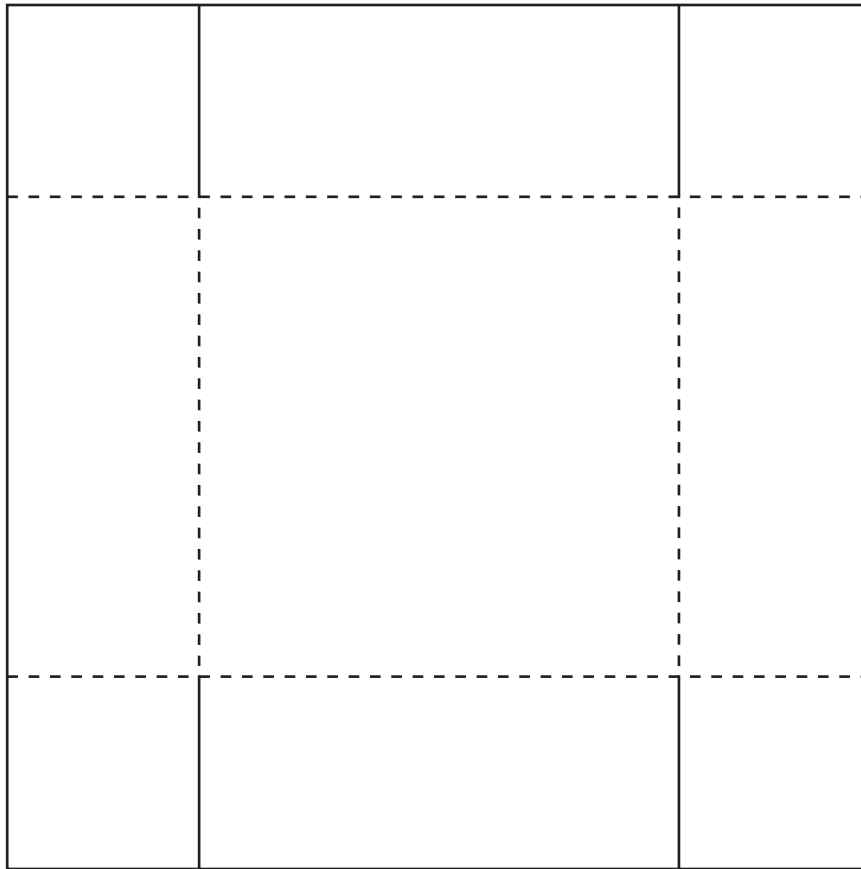


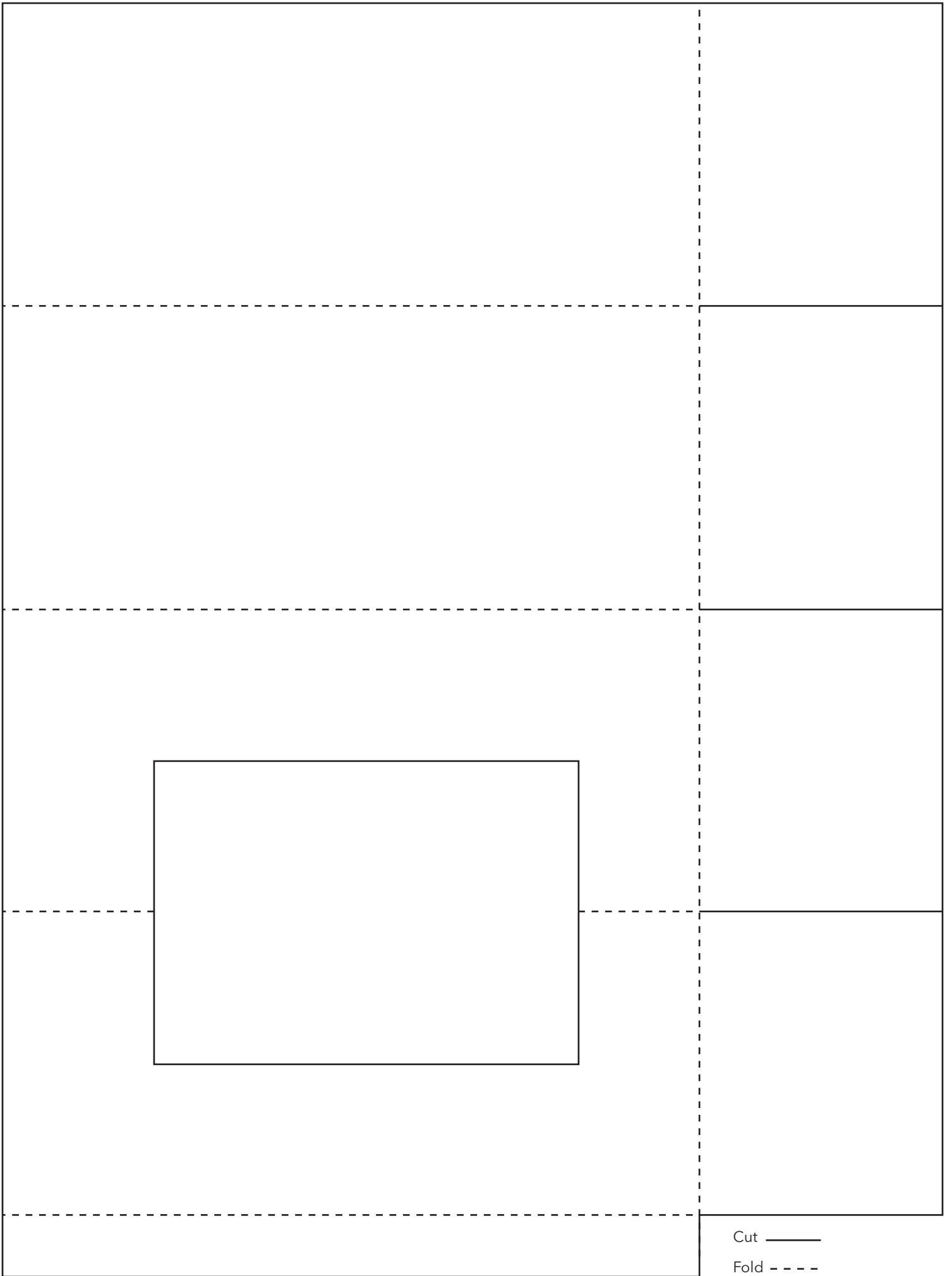
*VERY
VANILLA*



Cut ———

Fold - - - -





Cut ———

Fold - - - -